



[www.bmfresilience.com](http://www.bmfresilience.com)  
[info@bmfresilience.com](mailto:info@bmfresilience.com)

**BMF**  
RESILIENCE  


168 SE, 1<sup>st</sup> Street, Ste 707, Miami, FL 33131  
T: (888) 268-3243  
O: (786) 409-4899





Steel Construction  
&  
Luxury Design  
BMF Resilience, LLC





## BUSINESS DESCRIPTION

**BMF Resilience LLC** specializes in steel and traditional construction framework design, production and assembly services for hospitality, residential, commercial and industrial buildings. We custom design luxury finishing and high-end furniture designs. To our success, BMF operates as an extension of the Italian based company **EFFEBI SRL** providing interior rebuilding and renovating services in line with historic architectural designs.

In doing business with BMF and EFFEBI, clients will benefit from our international expertise on innovative construction concepts, residential, **commercial and industrial building renovations**, the enlargement of existing structures, interior design, remodeling and custom made furnishing. **To remain competitive in the industry, BMF also employs qualified installers, technicians, carpenters and also collaborates with other General Contractors.**

## PRODUCTS AND SERVICE CATEGORIES

### I. STEEL & CONCRETE CONSTRUCTION

BMF offers a wide range of high-quality steel construction design, production and assembly services including:

- Development of new steel and concrete buildings
- Construction elevations and enlargements using steel, concrete and dry material
- Design, planning, production and assembly of steel and concrete detail for infrastructures
- Design, planning, production and assembly of steel decor, roofs, stairs, canopies, verandas and other steel fixtures

### 2. REMODELING AND FURNISHING LUXURY FINISHES

BMF and EFFEBI offers innovative remodeling and furnishing services inspired by classic and modern Italian designs. A vast amount of furniture is imported from Italy, however, uses American installers. BMF also provides luxury finishes mainly to high-end fashion retail stores. Using a combination of steel, iron and crystal, BMF develops stylized finishing's enhancing the clients brand image with quality craftsmanship and first class designs.

## COMPETITIVE ADVANTAGES

### 1. WELL-ESTABLISHED PARENT COMPANY

**EFFEBI SRL** is a successful general construction company that has been operating in Italy since 1982 and is a major supplier of steel components. Moreover, **EFFEBI SRL** has collaborated with numerous clients on local and international projects relative to industrial buildings, commercial and residential buildings, historic buildings, seismic improvement and other miscellaneous structures. Having a strong parent company transfer knowledge and business experience to **BMF**, the sister American company, is one of the greatest competitive advantages. Both companies have a strong base of experts in the steel framing industry and implements the best practices to satisfy their clients. **BMF and EFFEBI** work together as the General Contractors.

### 2. QUALITY SUPPLIERS

**BMF Resilience LLC** purchases only high-quality steel construction elements, furniture, and furnishing material from renowned Italian companies such as **EFFEBI SRL**. **BMF** collaborates with these suppliers because they share the same commitment to their clients and only supplies high-quality products that meet **BMF's** standards.

### 3. INVESTMENT DIVERSIFICATION

**BMF Resilience LLC** operates in the steel framing and remodeling industry. Investment diversification allows the company to grow in different markets and reduce investment risk. In addition, **BMF** has circulating financial capital that will guarantee independence in decisions and strategies regarding the choice of market and operations.



70% of Manhattan could not have been built  
without STEEL construction







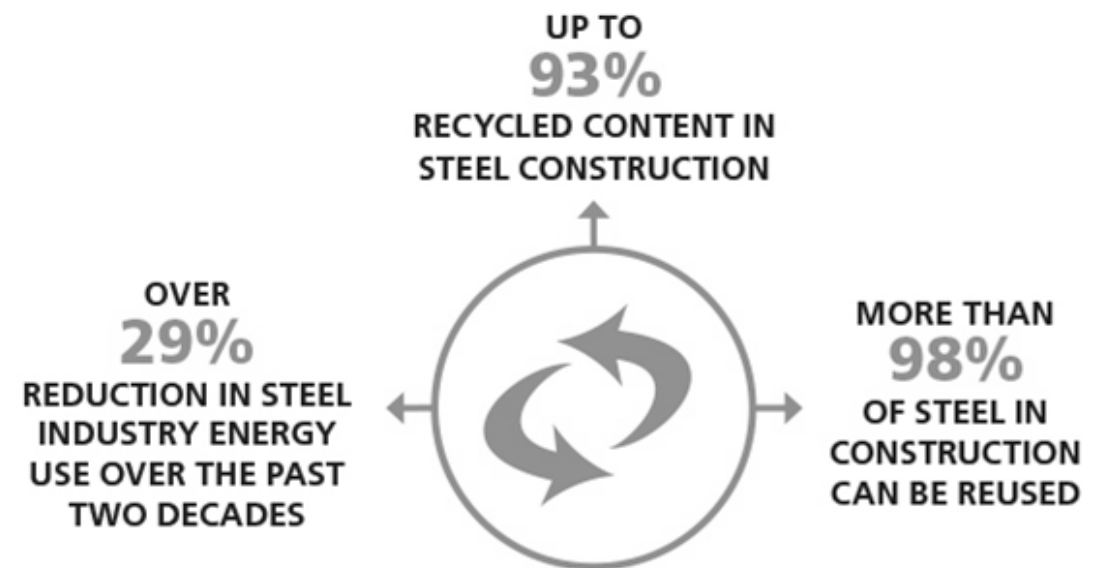
**TIME IS MONEY!**



**FREE YOUR IMAGINATION!**



**KEEP IT STRONG!**



**GO GREEN!**



## STEEL CONSTRUCTION

The metal constructions adopted for civil, commercial and industrial buildings have enabled us to consolidate the use of steel structural work, that present different and flexible construction requirements in terms of both type and size.

Some of our projects feature a unique and sophisticated design. We collaborate as requested by designers and technicians, to handle the complex issues of an intervention even regarding various construction techniques.

We have constructed buildings with large windows, skylights and load-bearing structures for multi-storey buildings.

**EFFEBI SRL** has carried out projects that required the creation of continuous facades produced with the combined use of various materials, such as cladding made of aluminum, steel, glass, masonry, prefabrication blocks, etc.





[www.bmfresilience.com](http://www.bmfresilience.com)  
[info@bmfresilience.com](mailto:info@bmfresilience.com)

**BMF**  
RESILIENCE  


168 SE, 1<sup>st</sup> Street, Ste 707, Miami, FL 33131  
T: (888) 268-3243  
O: (786) 409-4899



## CIVIL AND INDUSTRIAL RENOVATIONS

BMF Resilience LLC and EFFEBI SRL intervenes on buildings that need changes, structural adjustments, static reinforcement and complex renovation works. Building renovations and recovery is steadily developing. With the support of specialized technicians and designers, EFFEBI has carried out analysis, informative studies and prepared estimates for a very wide range of interventions.

We specialize in:

- Bracings for window frames, wall openings and doors
- Lintels for load-bearing wall support and metal structure
- Structural work in pre-existing buildings





## LUXURY

Today steel, iron, and glass are playing a leading role in the renewal and new construction of retail, commercial, and hospitality spaces for a designs of high-quality craftsmanship that evokes the essence of elegance.

The beauty of the “exposed” material incorporates state of the art structural elements that are key factors for both designers and developers when it comes to choosing a creative approach and designing the right atmosphere.







L  
U  
X  
U  
R  
Y







LUXURY



[www.bmfresilience.com](http://www.bmfresilience.com)  
[info@bmfresilience.com](mailto:info@bmfresilience.com)

BMF  
RESILIENCE  
3

168 SE, 1<sup>st</sup> Street, Ste 707, Miami, FL 33131  
T: (888) 268-3243  
O: (786) 409-4899



# LUXURY





# DESIGN

Iron and steel are natural materials that can be shaped by human creativity to become precious artifacts and historical reproductions.

Thanks to our corporate mission and the ability of our artisans, projects have been created that have combined design, art and traditional craftsmanship whether it is iron or steel or other materials such as wood and cement.

The collaboration with important architects, designers and landscapers has given rise to many engaging creations.





## THE RESTYLING PERFORMED FOR A DERMATOLOGICAL CLINIC AND LUXURY HOUSE

Restyling performed in dermatological clinic and luxury house has witnessed the use of steel, iron and glass. Today these materials play a leading role in the renewal of design and of a trendy look with their “slender” structural reinforcement, the beauty” of the expose material and “rapid” completion of works







# RESTYLING LUXURY HOUSE



BMF  
RESILIENCE,  
LLC





**R  
E  
S  
T  
I  
L  
I  
N  
G  
  
L  
U  
X  
U  
R  
Y  
  
H  
O  
U  
S  
E**









D  
E  
T  
A  
I  
L  
I  
N  
G  
S

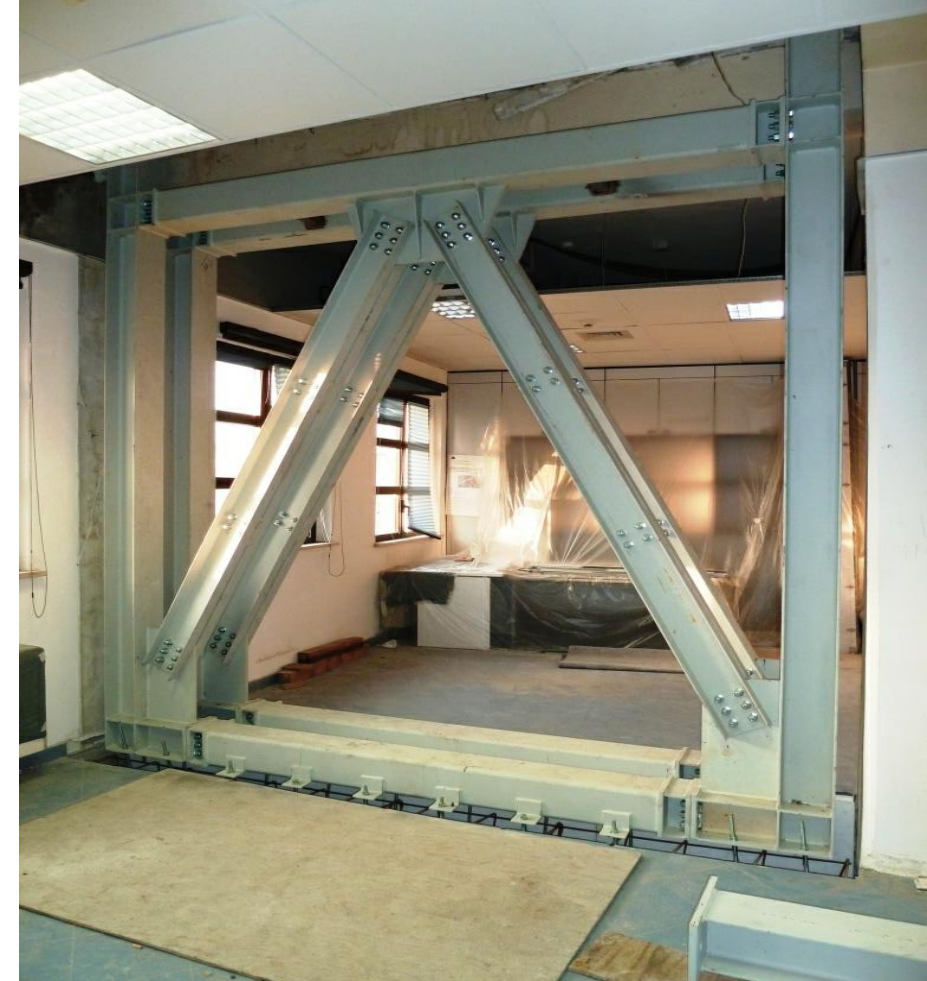
BMF  
RESILIENCE,  
LLC





# STRUCTURAL STEEL SYSTEM

BMF  
RESILIENCE,  
LLC





# PROJECT MANAGEMENT

For a long time we have been offering our **Project Manager Service** which aims to develop a project on behalf of a client or a company, managing the project from the outside.

In a construction project there are many stages to manage, from design to planning to construction itself. This means that managing such a project requires high-level multidisciplinary technical knowledge that allows you to successfully manage and conclude any initiative.



A project manager is responsible for planning, respecting the design, coordinating the economic and financial budget and therefore all the activities necessary for the supervision and success of the project

- preliminary cost budget
- negotiation with General Contractors and suppliers
- make cost estimates.
- organize the working hours of employees and workers.
- choose the most efficient construction method and strategies.
- stay in touch with customers for work or budget issues.
- discuss technical and contractual details with workers and other interested parties.
- keep an eye on the personnel under construction on the spot.
- collaborate with building and construction specialists.





**BMF**



**EFFEBI SRL**

**Thank you!**